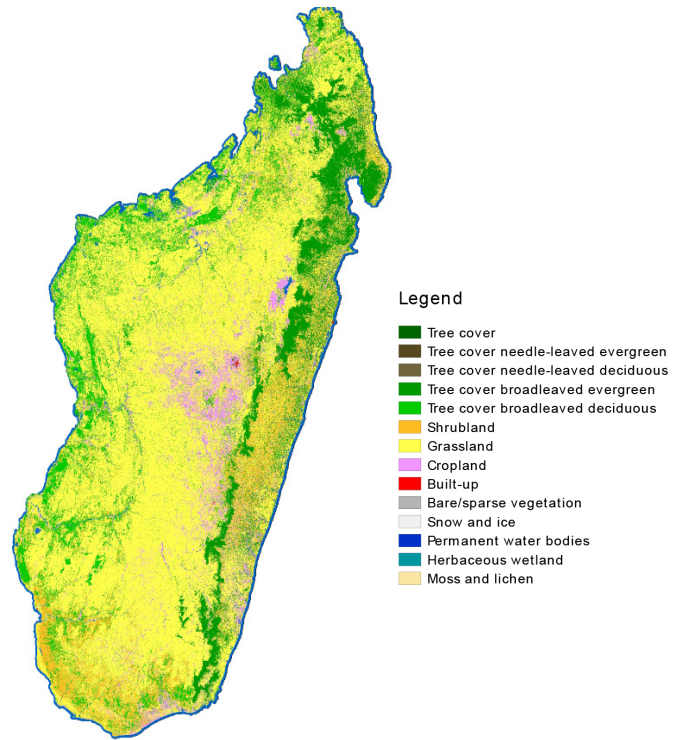


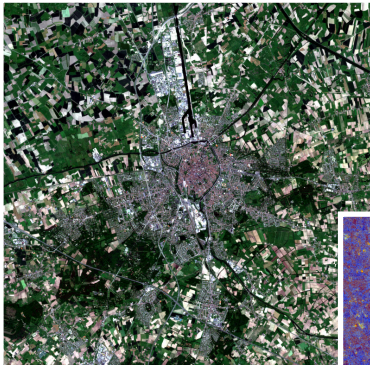


WorldCover

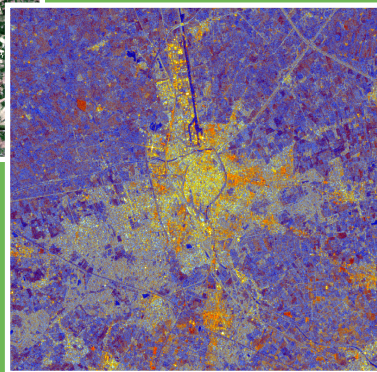
The European Space Agency (ESA) WorldCover project will establish a **new baseline global land cover product at 10 m resolution** for 2020 that is developed and validated in almost near-real time and at the same time maximizes the impact and uptake for the end users. A tremendous step forward towards the joint use of **Sentinel-1 and Sentinel-2 data for worldwide land cover mapping**.



Prototype land cover map over Madagascar at 10 m resolution



sentinel-2



sentinel-1

Sentinel-2 True Color Composite (left; R= Band 4, G= Band 3, B= Band 2) and Sentinel-1 False Color Composite (right; R= HH, G= HV, B= ratio) over Bruges (Belgium)

## WorldCover's objectives

- Produce, deliver and validate a global 10 meters land cover map of the world
- As fast as possible after the last data acquisition with a maximum of 3 months
- Minimum of 10 land cover classes & minimum overall accuracy of 75 %
- Develop innovative approaches exploiting Sentinel-1 & Sentinel-2
- Involve several end-users who's requirements will be considered as the primary input for all engineering aspects

## With and for various users

WorldCover has **five key end-user** which are an integral part of the project and will follow the whole project workflow from design up to validation and uptake.

WorldCover will **provide a substantial benefit to various user communities** and expands the established global land cover base of users and the development of novel services.

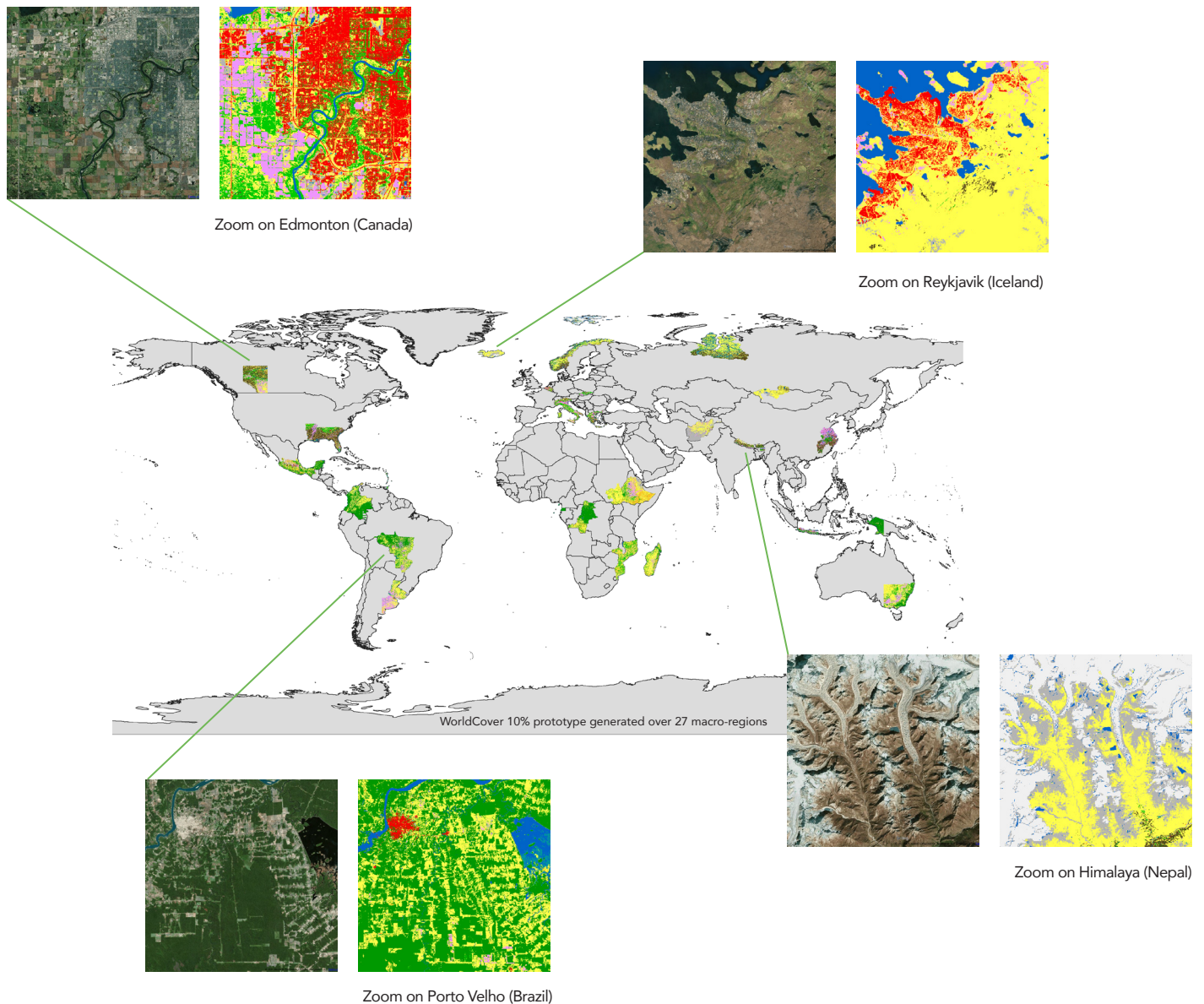


# Planning

The ESA WorldCover project is split in **2 phases** with phase 1 planned for a time span of 12 months, started in August 2019, and phase 2 following in the subsequent 12 months. The main goal of **phase 1** was to produce a **prototype land cover map over 27 macro-regions covering 10% of the world**. The exact locations of the macro-regions were selected based on a combination of **1** user preference (i.e. areas of interest for the key users), **2** diversity in ecosystem type and **3** variation in cloud cover.

In **phase 2**, further algorithm and production system development is planned before **producing the global map**, subsequent validation and distribution of the product to the users.

A **workshop** will be organised at month 21 (May - June 2021) to gather feedback of the users.



If you would like to learn more on the ESA WorldCover project please visit [esa-worldcover.org](http://esa-worldcover.org) and [eo4society.esa.int/projects/worldcover/](http://eo4society.esa.int/projects/worldcover/) or follow us on Twitter [@VITO\\_RS](https://twitter.com/VITO_RS)